



GW 16.06 WOMEN CENTRE



Arusha | Maji Moto



August 2016



Ecological Design



Femme International



Twelve Weeks



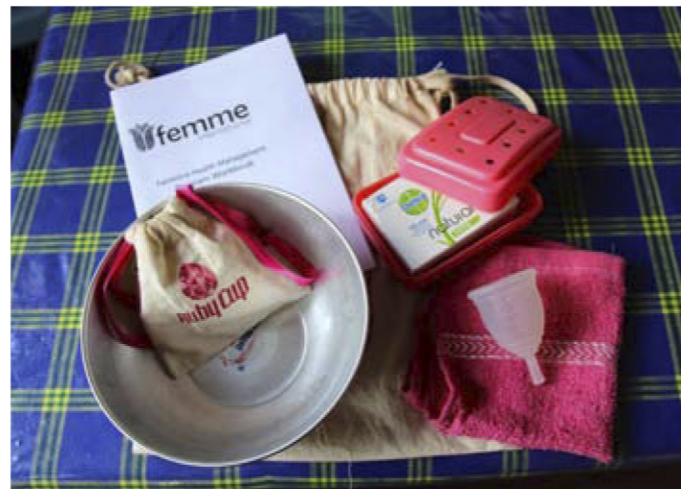
2010

COMMUNITY | PROJECT

WHAT | Women Community Centre

WHO | Maji Moto Women's Group

WHY | Currently the the Women's Group has no place to store their documents, organise meetings and arrange their businesses. Ambassador projects will be community buildings that are run by community members in order to reach everyone within the community.



FEMME INTERNATIONAL | PARTNER

WHAT | Femme International is an international non-profit organisation, which aims to address the unique health and safety needs of women and girls in developing communities.

WHY | Femme International helped to raise awareness on the importance of personal hygiene. Together we provided the community with a safe place for the women to meet and discuss everyday life.



FIRED BRICKS | TECHNIQUE

WHAT | Quite recently, red bricks replaced the more traditional buildings materials. This shift in building culture comes at a high cost, though. The drafted House for a Tree program tries to tackle this environmental issue by countering brick production with tree planting.

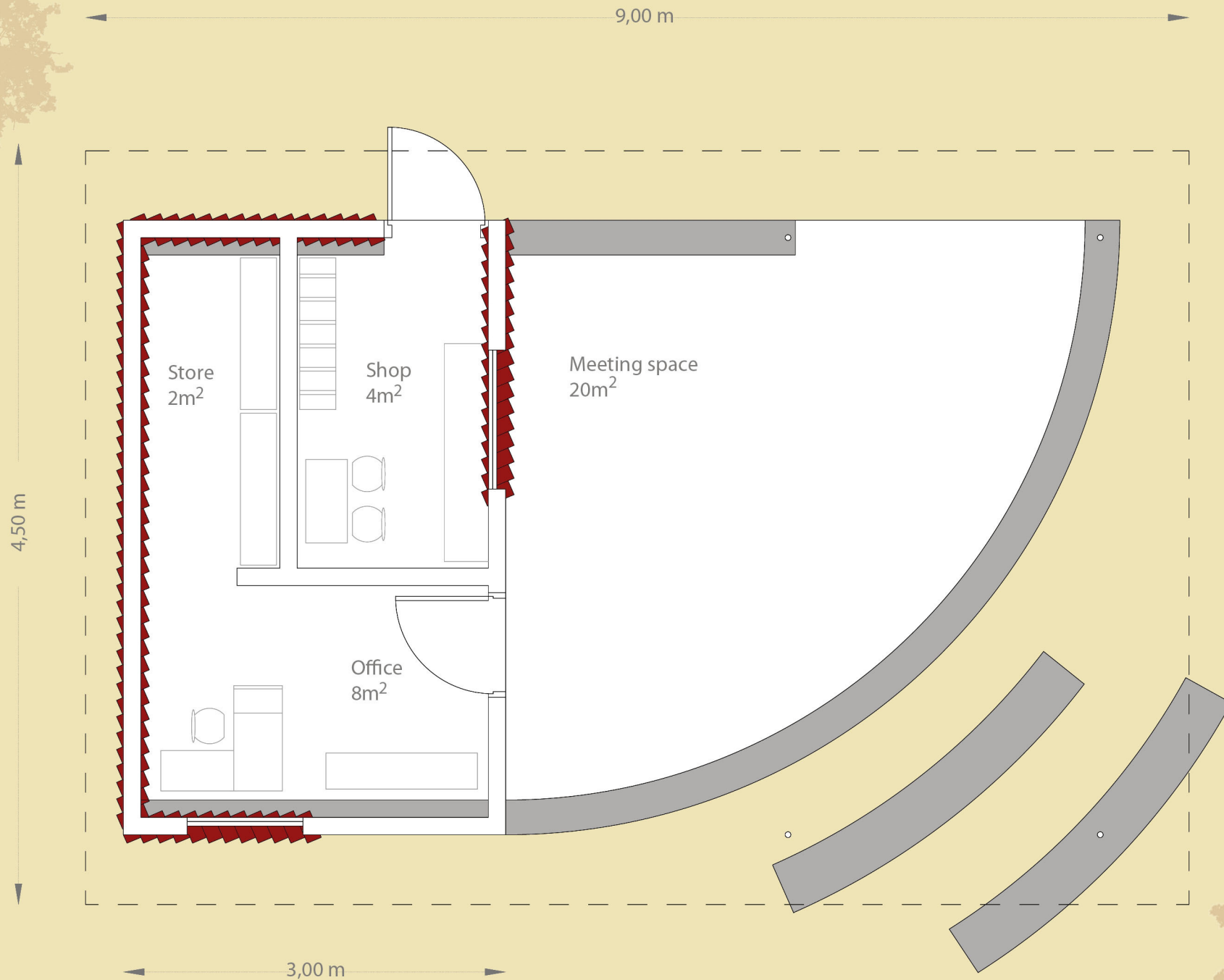
WHY | The clearance of trees is essential to the manufacturing process of burned bricks. The organization wants to introduce an environmental compensation program without banning the popular burned bricks.



WOMEN'S FORUM | DESIGN

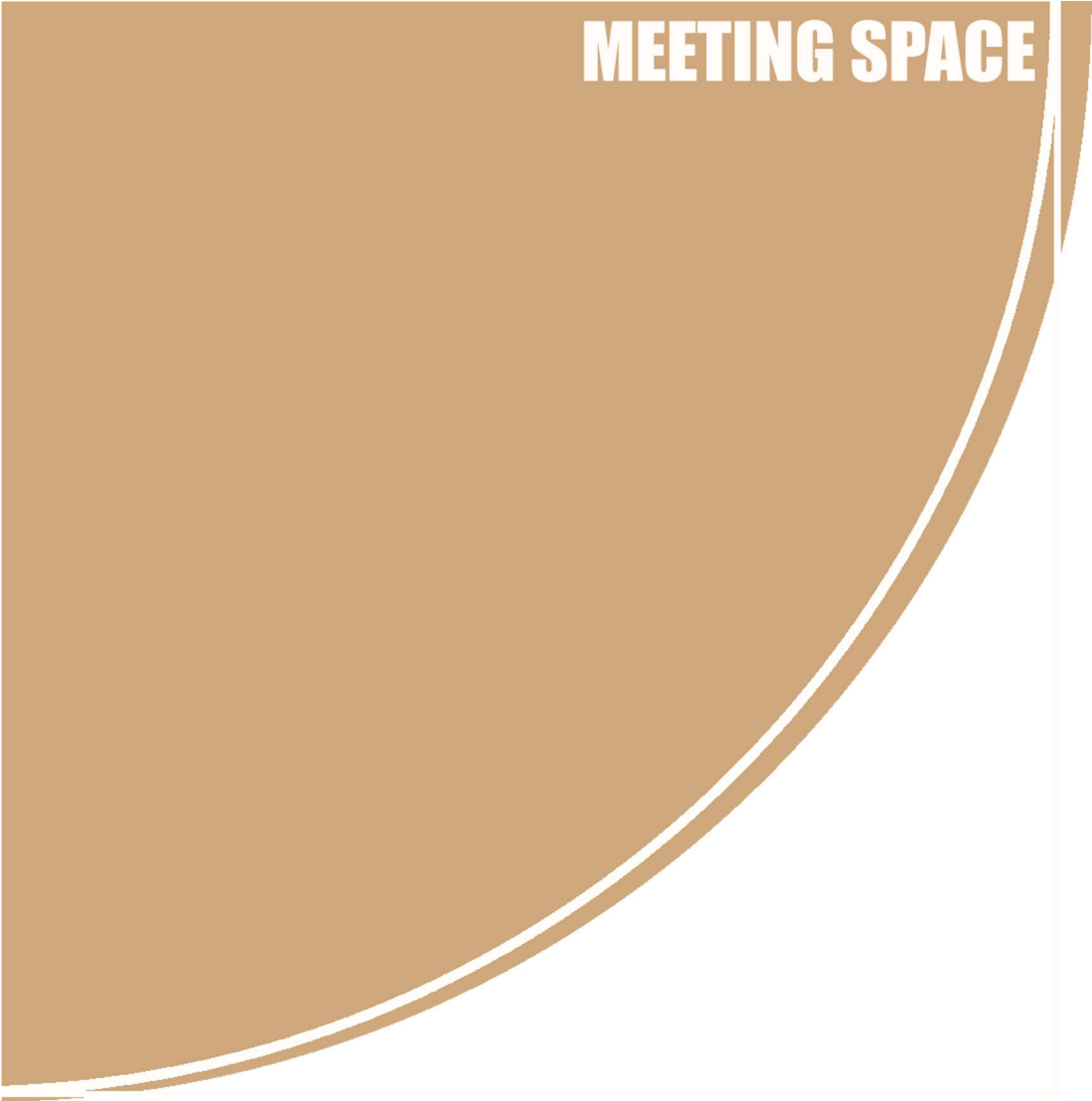
WHAT | The design includes an office, a storage and a shop. Just as important is the covered open space framed by steel columns and the wooden roof structure.

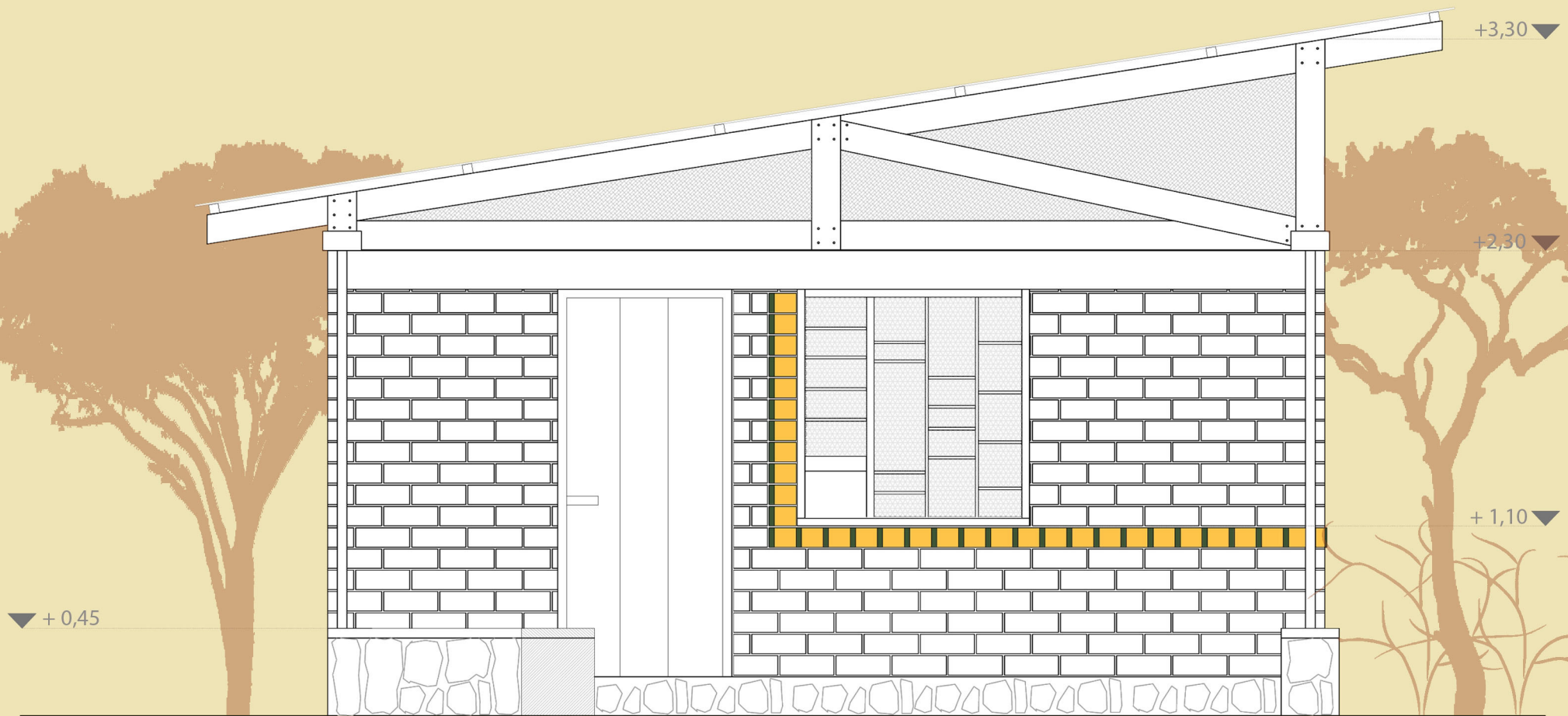
DETAIL | The foundation of the building is entirely made out of rocks and rises up to 40 centimetres above groundlevel. This plinth then takes the role of a curved bench when it leaves the red brick structure and clearly demarcates the boundaries of the covered outdoor space.



GENERAL PLAN

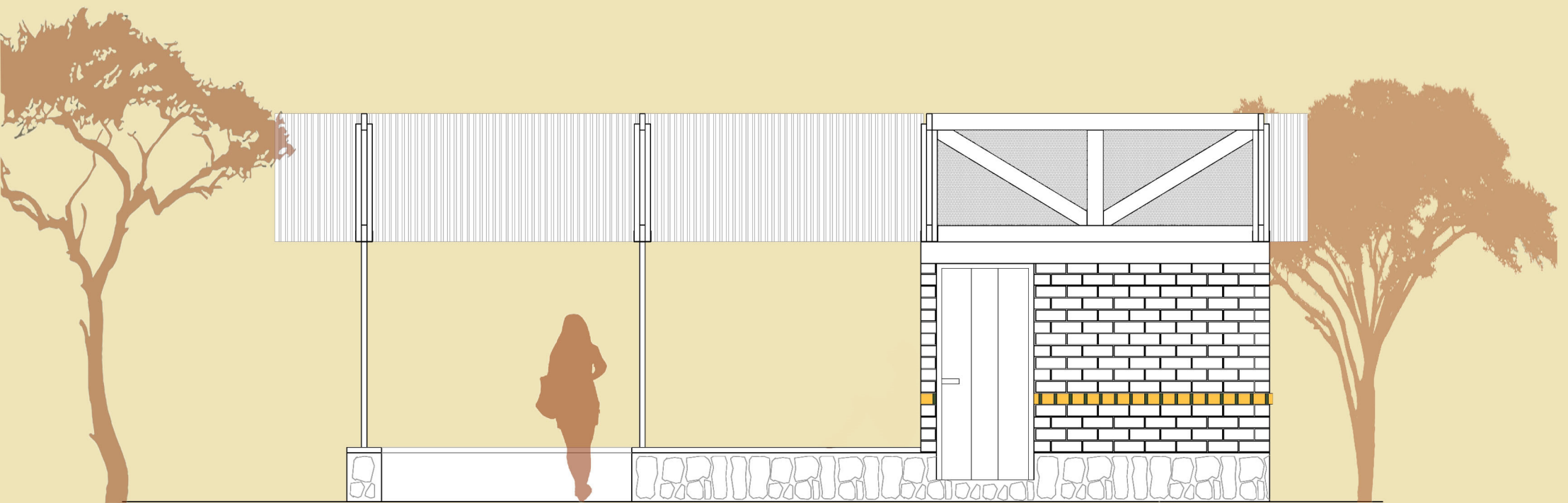
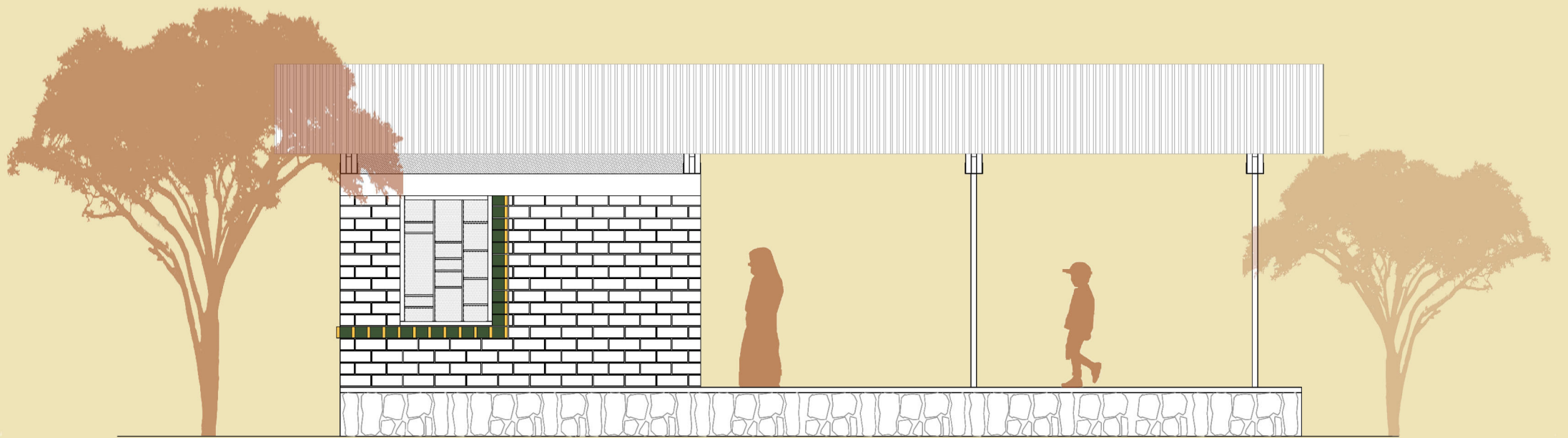






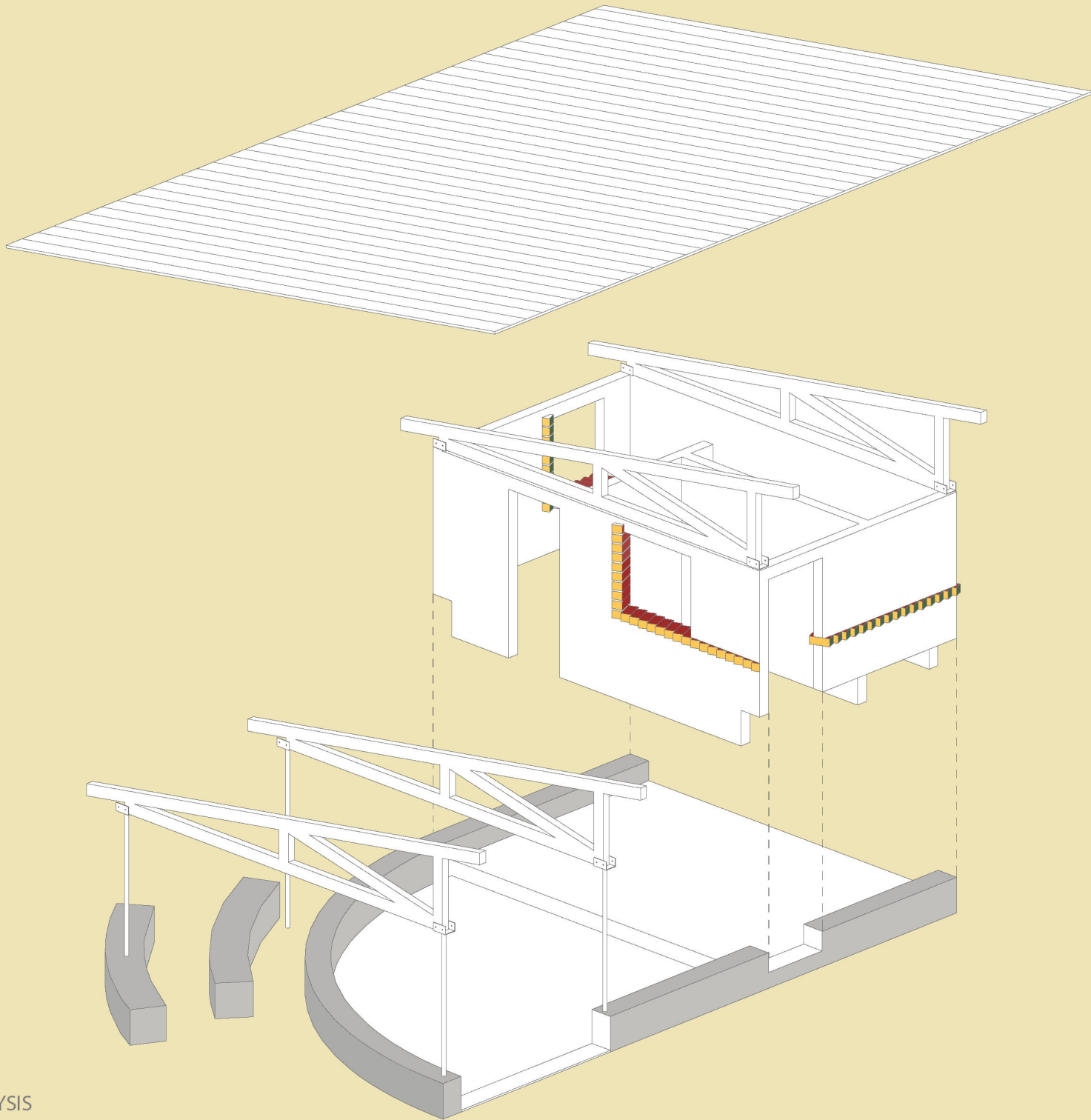
FRONT ELEVATION





SIDE ELEVATIONS





VOLUMETRIC ANALYSIS